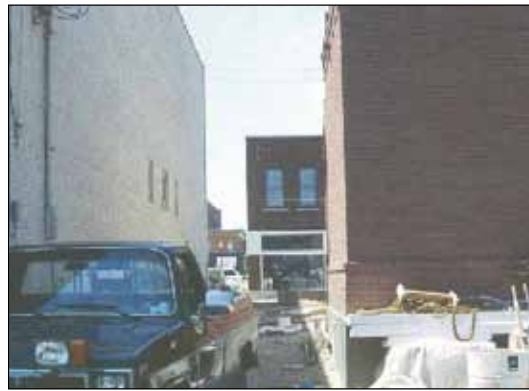


Faced with commercial development on the edges of town and the resultant decline in central city business, the City of Holland has taken great strides to revitalize the downtown area into a mixed use destination center.

In conjunction with Bill Johnson, FASLA, the Johnson Hill Land Ethics Studio assisted with numerous concept plans for a variety of downtown properties, street and alleyway studies, parking and open space planning, and finally, construction drawings for improvements to a downtown park and walkway.

Specific projects included Window on the Waterfront Park, Darby Park, Alpen Rose Restaurant Garden, Warm Friends entry plaza, "Superblock"

improvements, and the alleyways and parking lots located north and south of Seventh Street. Many of the downtown projects included sites that have received minimal attention over the years including alleyways, vacant building sites, and rear parking lots. Because many of these sites are intended to be heavily used, durability and ease of maintenance were top priorities. Intensive one-day and two-day design workshops were conducted to address specific design elements. These design charettes have been particularly effective in channeling the planning efforts.



Downtown Revitalization

Holland, Michigan

City of Holland

270 South River Avenue
Holland, Michigan 49423
616.355.1363



The
Johnson Hill
Land Ethics
Studio

516 East Washington Street • Ann Arbor, Michigan 48104
t: 734.668.7416 f: 734.668.2525 www.jhle-studio.com

153 East Front Street • Traverse City, Michigan 49684
t: 231.929.9438 f: 231.932.9250 www.jhle-studio.com